

SMARTS

Small and Moderate Aperture Research Telescope System

CHIRON

RVs to ~ 10 m/s
stellar characterization



radial
velocity
program
2017+

imaging
program
1999+

1.0m

Schmidt

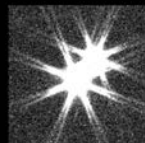
4.0m

1.5m

0.9m

Todd Henry

thenry@astro.gsu.edu



RECONS

Research Consortium on Nearby Stars

Wei-Chun Jao

jao@astro.gsu.edu

CHIRON Status

GENERAL

**2017B reopened
2018A to 2022B**

**Chilean observers
10 semesters**

Papers

84 +

Dissertations

7 +

NN-EXPLORE

2019A to 2022B

8 semesters

NASA Time

2679 hours

Observed Time

2492 hours = 95%

NASA PI Count

21 people

NASA PI Science

55 programs

NASA Papers

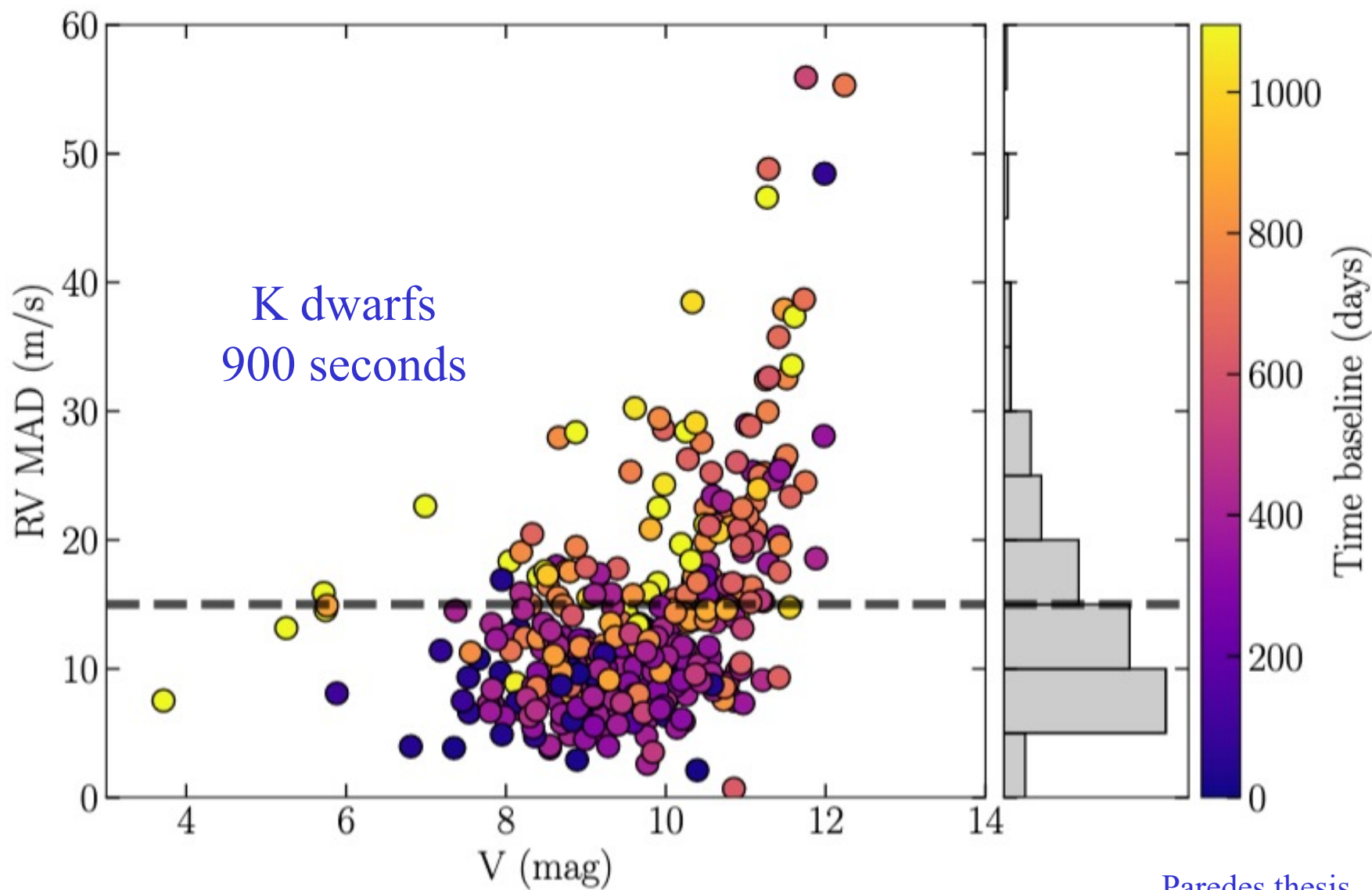
29 +

NASA Planet Papers

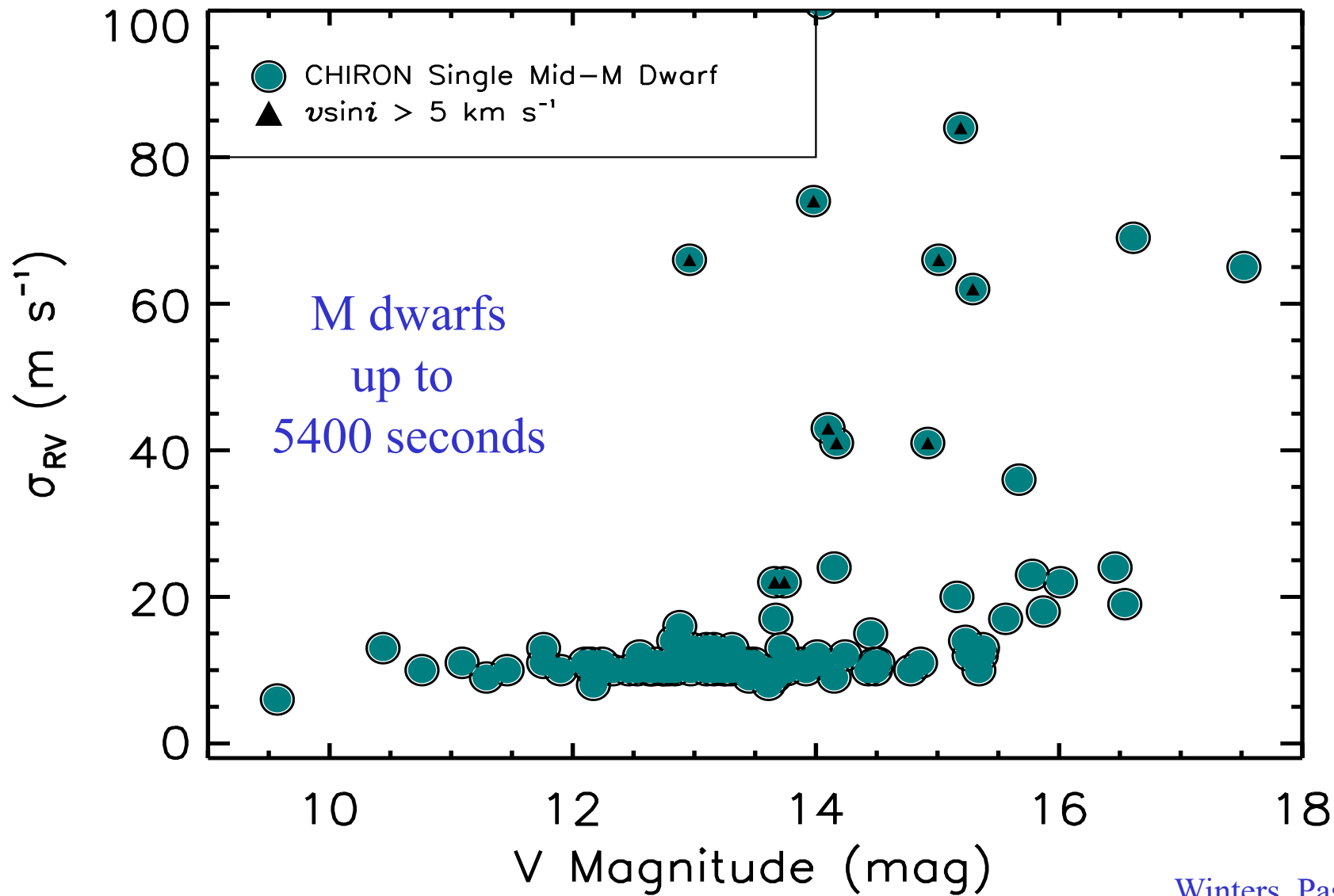
24 +



CHIRON Capabilities



CHIRON Capabilities



CHIRON Exoplanets

P_{orb} (days) M_{sini} (Jup)

known

2.2 1.17

3.5 0.50

4.1 0.49

10.7 1.09

23.6 0.63

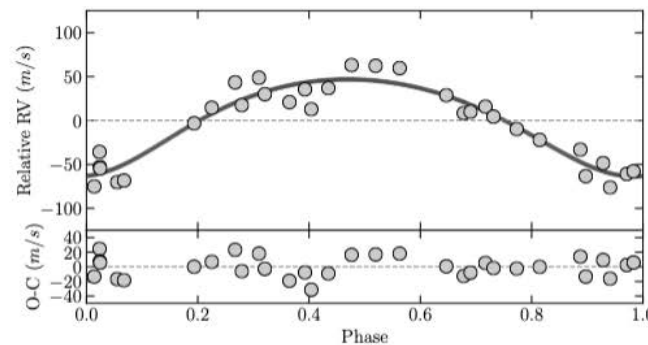
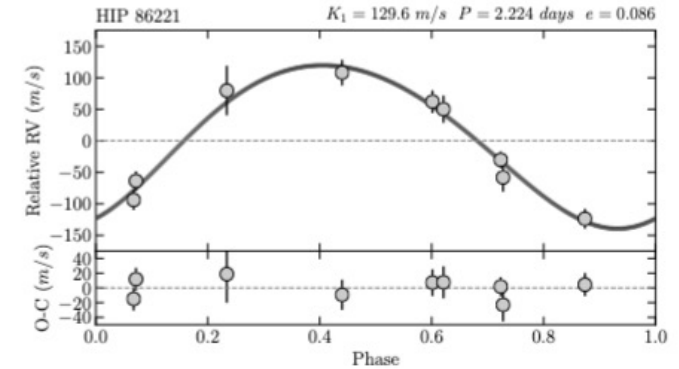
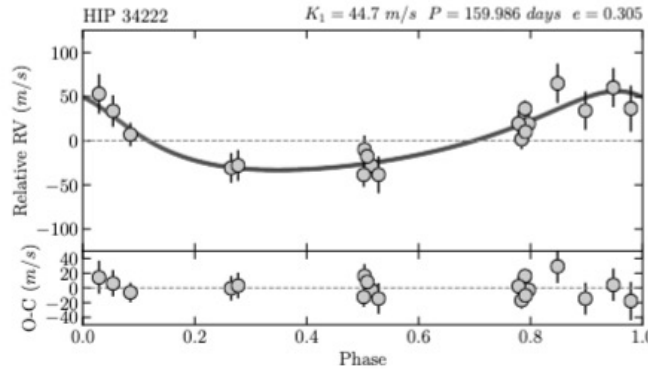
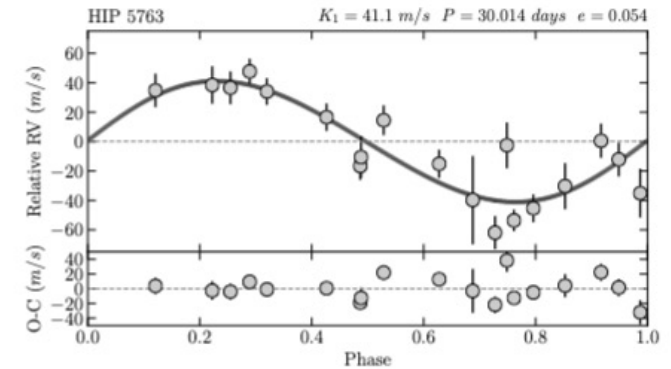
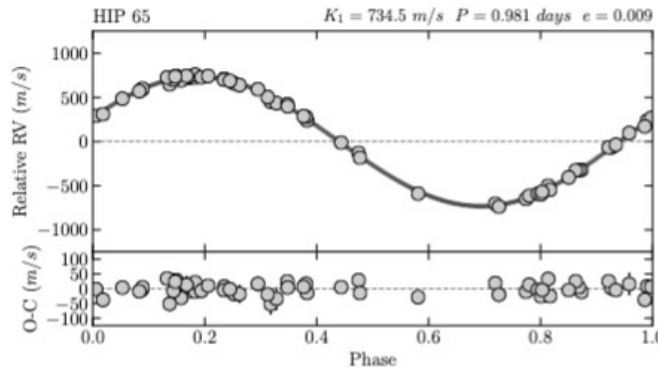
new

1.0 2.95

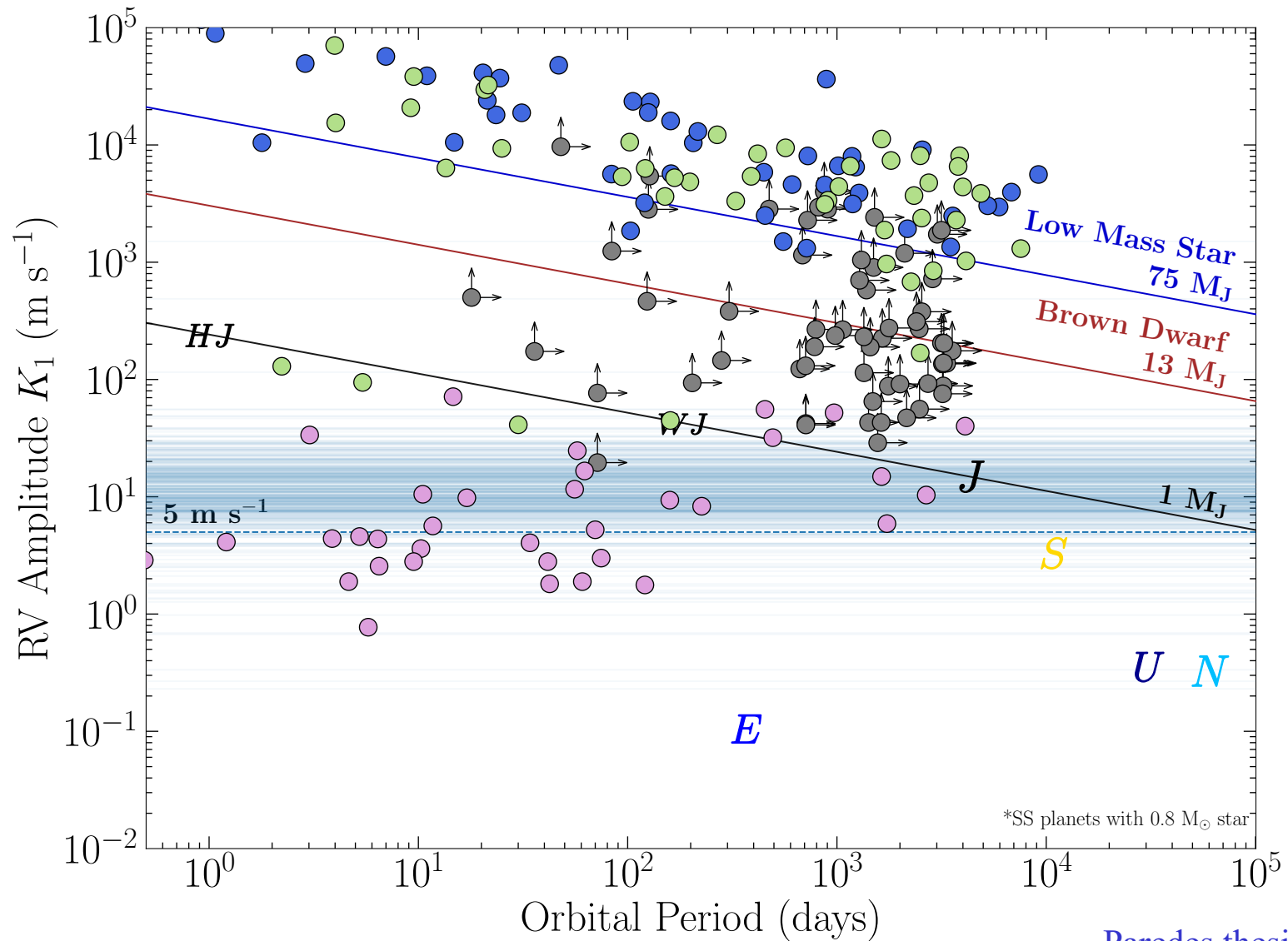
2.2 0.71

30.0 0.51

160.0 0.83



CHIRON Exoplanets



SMARTS

Small and Moderate Aperture Research Telescope System

CHIRON

RVs to ~ 10 m/s
stellar characterization

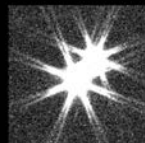
radial
velocity
program

2017+



1.5m

Todd Henry
thenry@astro.gsu.edu



RECONS
Research Consortium on Nearby Stars

Wei-Chun Jao
jao@astro.gsu.edu