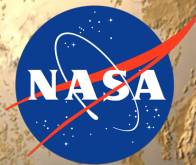


A space-themed background featuring a view of Earth from space on the right side, with a bright star or sun in the upper left corner. The text is overlaid on a dark blue horizontal band.

Tracing Exoplanet Science Requirements to Mission Requirements for HWO

Christopher Stark
NASA GSFC



The Science Traceability Matrix (STM)

Define Science Goal  Flow Down to Instrument Requirements

Table 5.1-2. Science Traceability Matrix. Baseline science objectives and requirements appear in black typeface, while threshold objectives and requirements appear in grey, italic typeface. Driving requirements appear in the payload functional requirements in blue, bold typeface.

Goal	Science Objectives	Scientific Measurement Requirements		Payload Functional Requirements	Baseline Projected Performance
		Physical Parameters	Observables		
To seek out nearby worlds and explore their habitability.	<p>O1: To determine if rocky planets (0.5–1.75 R_{\oplus}) continuously orbiting within the habitable zone (HZ) exist around nearby sunlike stars, surveying enough stars to detect and measure the orbits of at least 20 exo-Earth candidates (EECs) if each observed star hosted one EEC. To detect and measure the orbit of at least one EEC with $\geq 95\%$ confidence.</p> <p><i>Threshold: To determine if rocky planets (0.5–1.75 R_{\oplus}) continuously orbiting within the habitable zone (HZ) exist around nearby sunlike stars, surveying enough stars to detect and measure the orbits of at least 12 exo-Earth candidates (EECs) if each observed star hosted one EEC. To detect and measure the orbit of at least one EEC with $\geq 90\%$ confidence.</i></p>	<p>Planet position with respect to the central star over time to determine the orbit semi-major axis, eccentricity, and inclination to $\leq 10\%$ accuracy.</p> <p>Planet radius determined within a factor of 2 of the true value.</p>	<p>Star-to-planet separation measured at ≥ 4 different orbital positions.</p> <p>Broadband planetary flux centered at 0.5 μm measured at ≥ 4 different orbital positions.</p>	<p>F1.1 Broadband high contrast visible imaging with an $IWA_{0.5} \leq 80$ mas at 0.5 μm.</p> <p>F1.2 Angular positional accuracy ≤ 5 milliarcseconds (mas) root mean square (RMS).</p> <p>F1.3 Ability to visit target star ≥ 4 times.</p> <p>F1.4 Signal-to-noise ratio $SNR \geq 7$ on a point source that is $\geq 10^{10}$ times fainter than a solar twin star located at 9 pc ($V = 4.6$ mag) and at ≤ 80 mas from it using broadband photometry centered at 0.5 μm in an exposure time of ≤ 20 hours (h).</p> <p>See Figure 5.2-1 for the baseline coronagraph instrument error budget.</p> <p><i>Threshold: $IWA_{0.5} \leq 105$ mas at 0.5 μm.</i></p>	<p>Coronagraph broadband high contrast visible imaging with an $IWA_{0.5} = 62$ mas at 0.5 μm.</p> <p>Angular positional accuracy: 0.7 mas at 100 Hz</p> <p>Ability to visit target star: 6 times, as necessary</p> <p>$SNR = 7$ on a point source that is 10^{10} times fainter than a solar twin star located at 9 pc ($V = 4.6$ mag) and at 80 mas from it using broadband photometry centered at 0.5 μm in an exposure time of 9.6 h.</p>
	<p>O2: To determine if planets identified in Objective 1 have potentially habitable conditions (an atmosphere containing water vapor). Also, to determine if rocky planets outside the “2D EEC zone” have potentially habitable conditions, surveying an equivalent number of rocky planets outside the 2D EEC zone to those within it.</p> <p><i>Threshold: To determine if the planets identified in the threshold requirement of Objective 1 have potentially habitable conditions (an atmosphere containing water vapor). Also, to determine if rocky planets that do not fit into Objective 1 have potentially habitable conditions, surveying ≥ 1 rocky planet interior and ≥ 1 rocky planet exterior to the HZ.</i></p>	<p>The abundance of atmospheric H_2O if the column density is ≥ 0.4 g/cm^2 (modern Earth at the outer edge of the HZ).</p> <p><i>Threshold: The abundance of atmospheric H_2O if the column density is ≥ 2.9 g/cm^2 (Modern Earth).</i></p>	<p>Planetary spectrum, including ≥ 2 H_2O absorption features in the visible–near-IR.</p> <p><i>Threshold: Planetary spectrum, including ≥ 1 H_2O absorption feature in the visible.</i></p>	<p>F2.1 Visible–near-IR spectroscopy with an $IWA_{0.5} \leq 80$ mas at 1.0 μm.</p> <p>F2.2 Spectral range ≤ 0.7 μm to ≥ 1.0 μm.</p> <p>F2.3 Spectral resolution (R): $R \geq 35$ at 0.82 μm with $SNR \geq 10$ and $R \geq 17$ at 0.94 μm with $SNR \geq 10$. Or $R \geq 17$ at 0.94 μm with $SNR \geq 10$ and $R \geq 19$ at 1.13 μm with $SNR \geq 10$.</p> <p><i>Threshold: Visible spectroscopy with an $IWA_{0.5} \leq 105$ mas at 0.75 μm. Spectral range ≤ 0.7 μm to ≥ 1.0 μm. $R \geq 35$ at 0.72 μm with $SNR \geq 5$.</i></p>	<p>Starshade UV–near-IR spectroscopy with an $IWA_{0.5} = 58$ mas at 1.0 μm.</p> <p>Spectral range: 0.2–1.8 μm.</p> <p>$R = 7$ with $SNR = 10$ from 0.2–0.45 μm. $R = 140$ with $SNR = 10$ from 0.45–0.975 μm. $R = 40$ with $SNR = 10$ from 0.975–1.8 μm.</p>
	<p>O3: To determine if planets identified in Objective 1, regardless of whether they meet the</p>	<p>The abundance of atmospheric molecular species if the column</p>	<p>Planetary spectrum from the UV–near-IR, including the O_2 cutoff</p>	<p>F3.1 UV–near-IR spectroscopy $IWA_{0.5} \leq 80$ mas at 0.8 μm.</p>	<p>Starshade UV–near-IR spectroscopy with an $IWA_{0.5} = 58$ mas at 0.8 μm.</p>

Ballparking HWO instrument requirements for exoplanet spectroscopy

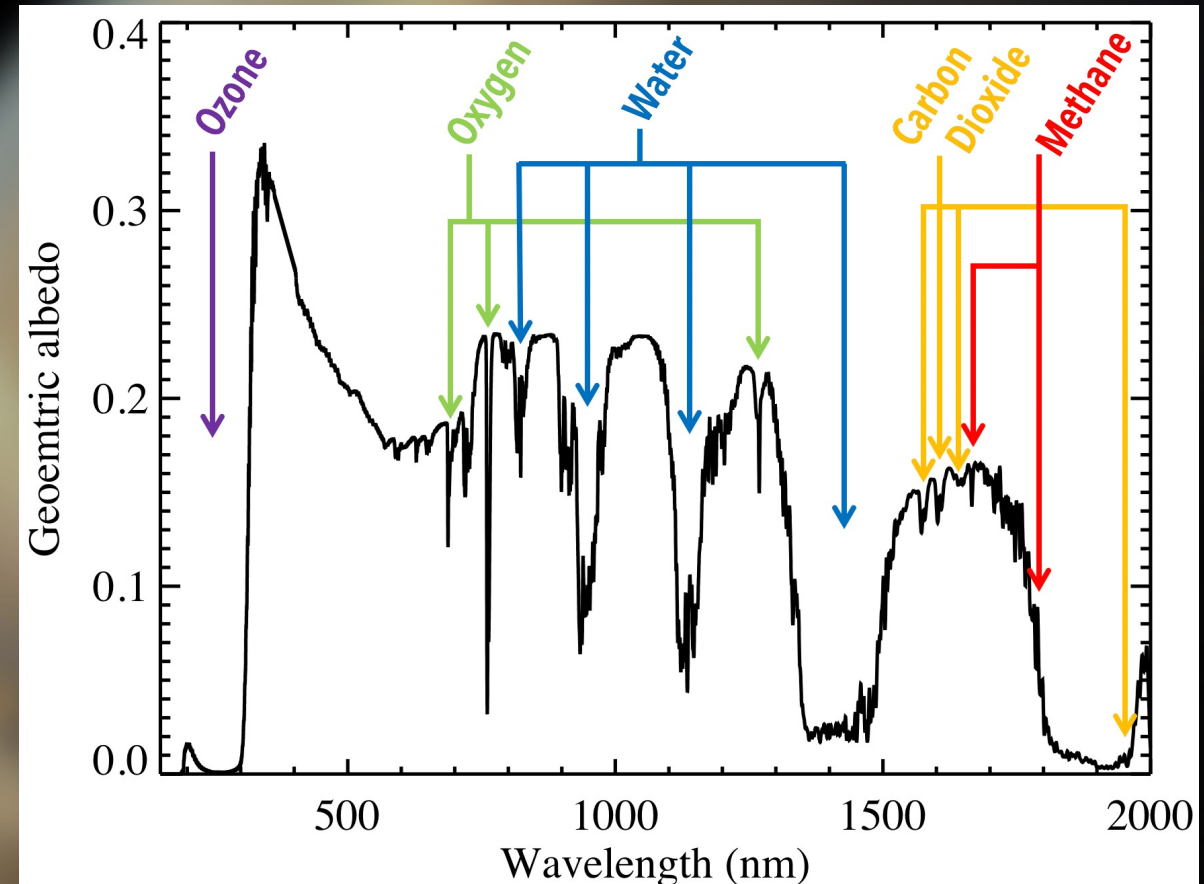
Contrast \sim ratio of Earth's flux to Sun's flux at quadrature
 $\sim g \Phi(\text{quadrature}) (R/r)^2$
 $\sim 0.2 * 0.3 * (4e-5)^2$
 $\sim 1e-10$

Noise floor \sim Contrast / SNR
 $\sim 1e-10 / 10$
 $\sim 1e-11$

IWA \sim Scale of HZ around Sun-like star at 10 pc
 $\sim 1 \text{ AU} / 10 \text{ pc}$
 $\sim 100 \text{ mas}$
 $\sim 3 \lambda/D @ 1 \text{ micron for } 6 \text{ m aperture}$

OWA \sim Outer edge of Alpha Cen A's HZ
 $\sim 1.7 * \sqrt{L_{\text{AlphaCenA}} / d_{\text{AlphaCenA}}}$
 $\sim 2.1 \text{ AU} / 1.3 \text{ pc}$
 $\sim 1600 \text{ mas}$
 $\sim 50 \lambda/D @ 1 \text{ micron for } 6 \text{ m aperture}$

Bandwidth \sim range of interesting spectral features
 $\sim 0.2 - 2 \text{ microns}$



The need for a flexible Design Reference Mission (DRM)

Problems with this approach

- Fiducials that define requirements can mislead. Not all stars are solar twins!
- What we really care about is scientific *productivity*
- The flow from science to mission requirements goes both ways

STMs & science req. docs are a critical formalization, but...

- They are relatively static
- They do not show all of the sensitivities of science to performance parameters
- They do not show the interdependency of performance parameters

DRMs are the machinery to establish/maintain science & mission requirements, and perform trade studies

DRMs are the science traceability machinery

A DRM is a critical tool at the mission level for evaluating potential architectural concepts. Without a well thought out DRM, a conceptual mission design is at risk for not optimizing system trades, identifying necessary technology development, managing resources, and achieving a balanced design.

The DRM provides the traceability from science objectives to engineering requirements and can be used to examine options and implications for observations; finding “tall poles” and drivers and identifying the ultimate limits of performance. In this manner, it is a crucial tool for recognizing and nourishing the major strengths of the observatory and ranking design drivers.

Lightsey & Wilkinson (white paper, 2015)

Exoplanet imaging DRMs started with TPF

THE ASTROPHYSICAL JOURNAL, 607:1003–1013, 2004 June 1
 © 2004. The American Astronomical Society. All rights reserved. Printed in U.S.A.

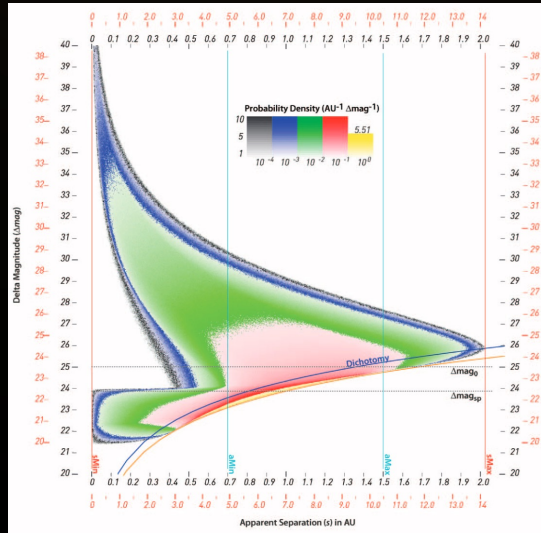
OBSCURATIONAL COMPLETENESS

ROBERT A. BROWN

Space Telescope Science Institute,¹ 3700 San Martin Drive, Baltimore, MD 21218; rbrown@stsci.edu

Received 2003 August 8; accepted 2004 February 13

Brown (2004)



Brown (2005)

4. OPTIMIZATION

Our goal is to maximize the completeness integrated over all stars, subject to two constraints:
 1) The maximum completeness on any star is limited by the instrument sensitivity floor.
 2) The total integration time is limited by the allotted mission planet search duration.

The first constraint is folded into the functional form of completeness, which is given by:

$$C = \sum_{i=1}^N C_i(\tau_i),$$

where $C_i(\tau_i)$ is the completeness obtained on the i th star after integrating for time τ_i , and

$$\tau_i < \tau_{MAX,i}.$$

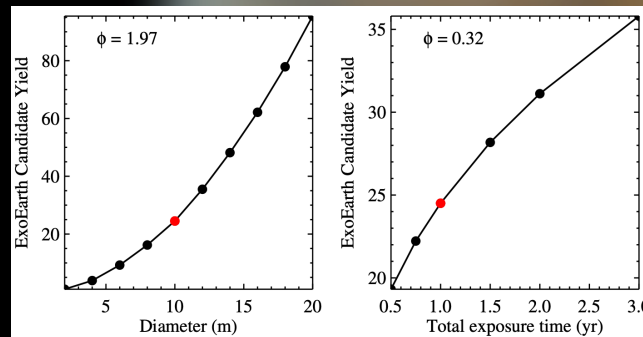
The total integration time is shared by N stars and is constrained by

$$\tau_m \geq \sum_{i=1}^N \tau_i.$$

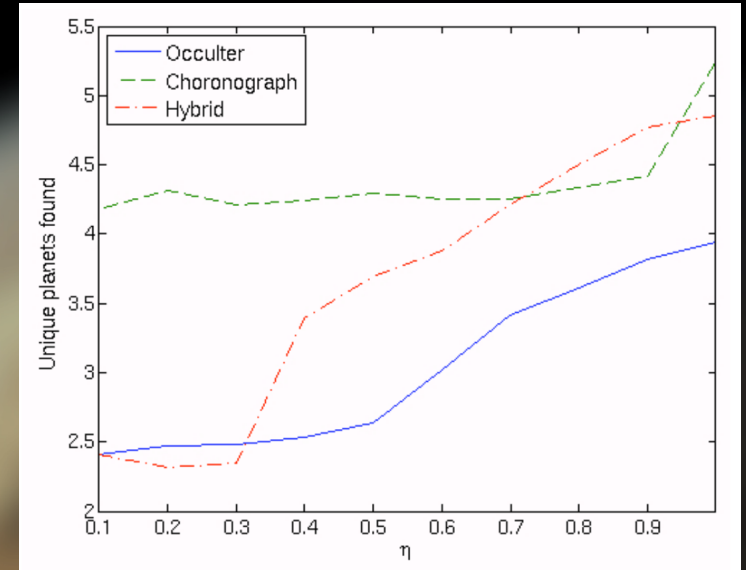
We choose $\tau_m = 1$ year to represent the integration time available during a three year mission.

In order to satisfy this optimization problem we observe all stars to the point where they have equal slopes,

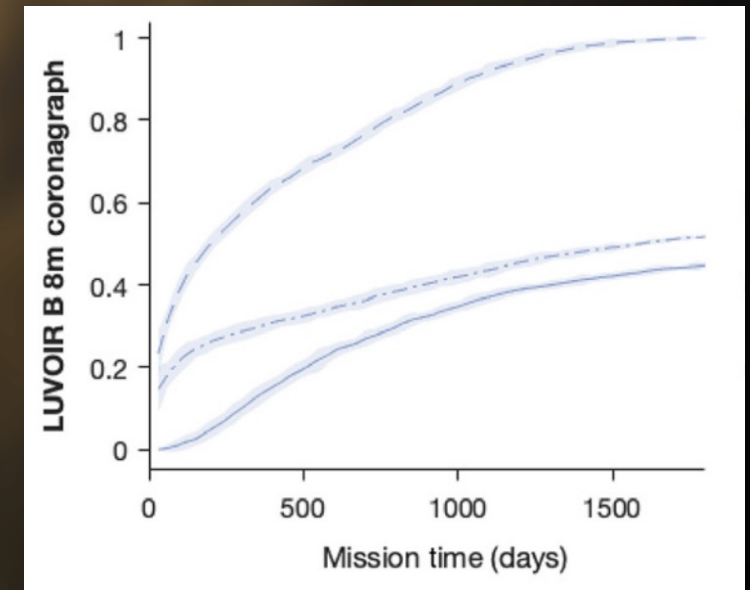
Hunyadi, Lo, & Shaklan (2007)



Stark et al. (2015)



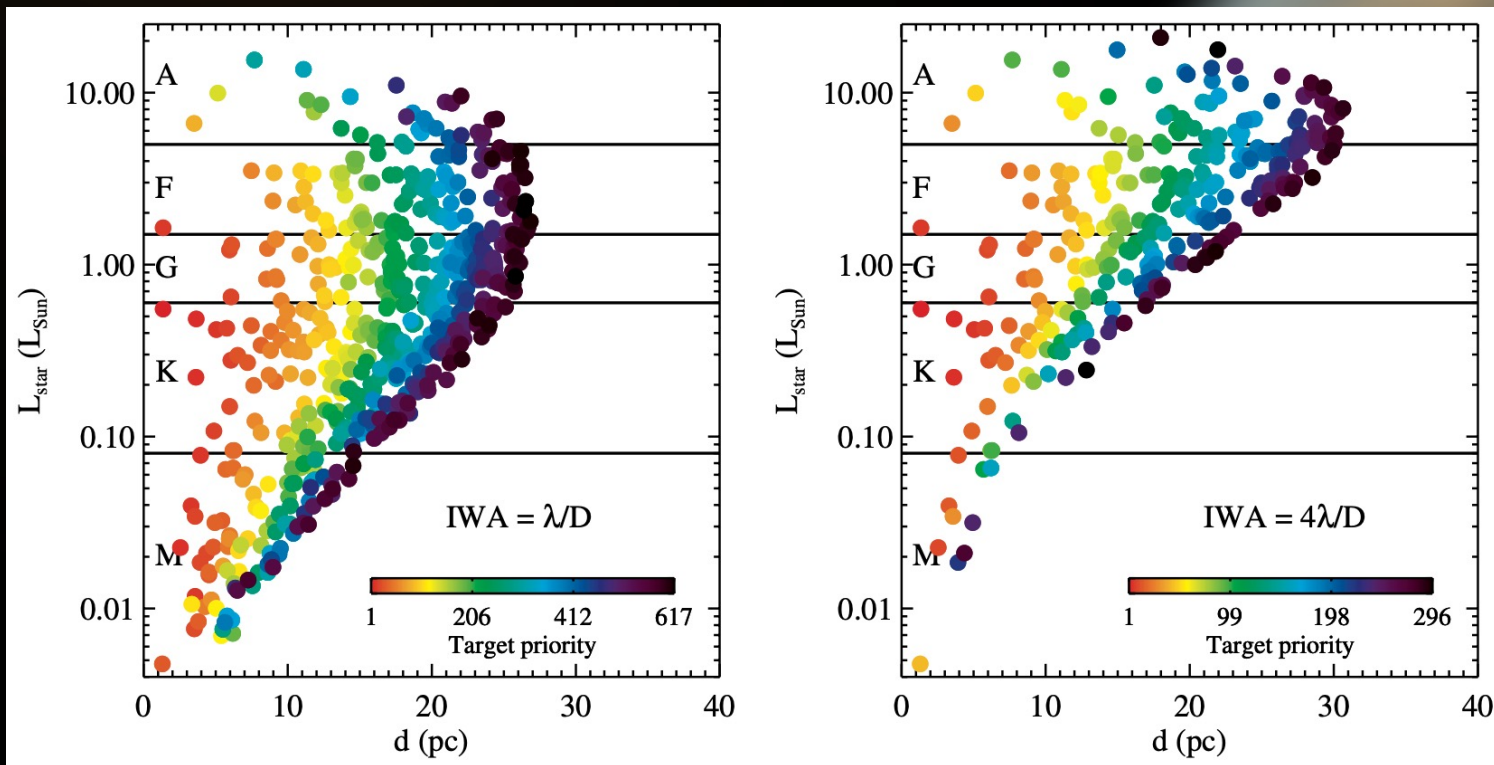
Savransky & Kasin (2008)



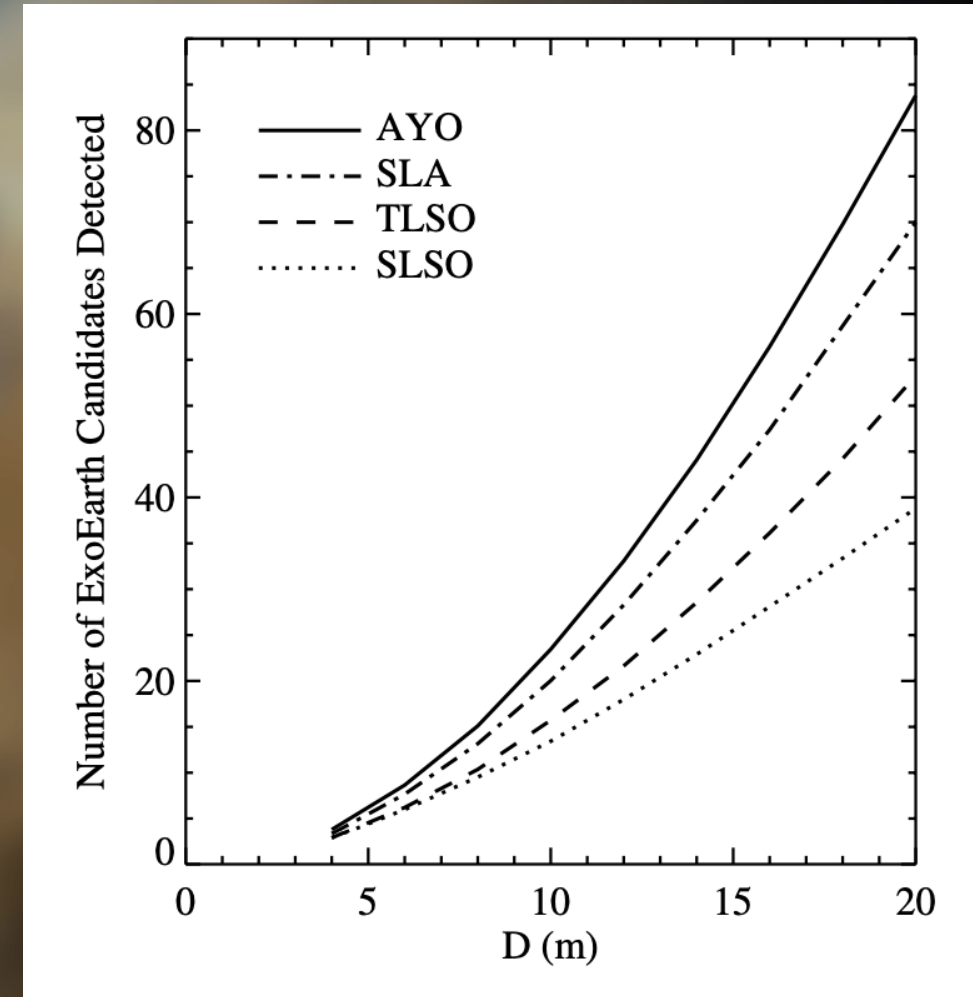
Morgan et al. (2021)

DRMs *must* optimize observations

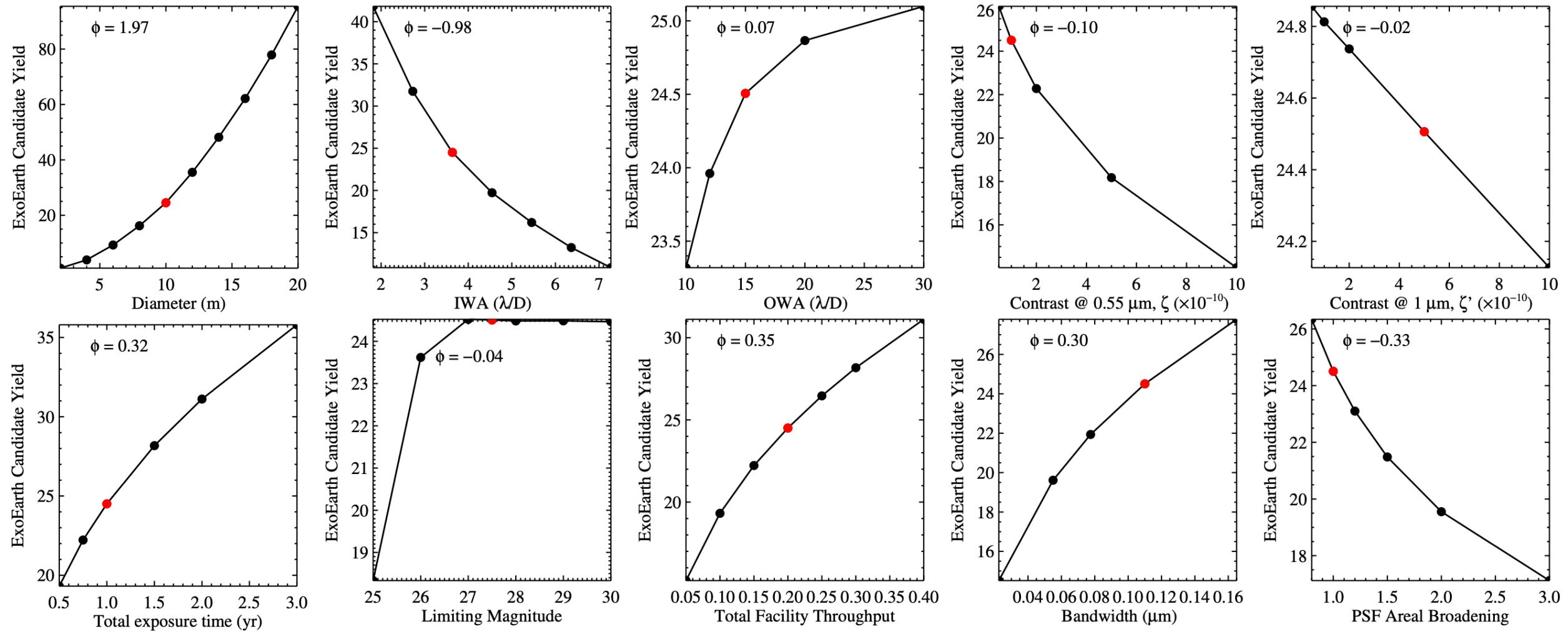
- Assumptions/prescriptions re how to observe can lead to unintended bias, or worse—**incorrect trade studies**
- Pick a metric, then get out of the way and let your code tell you how to use the mission



Target list adapts to changes in instrument

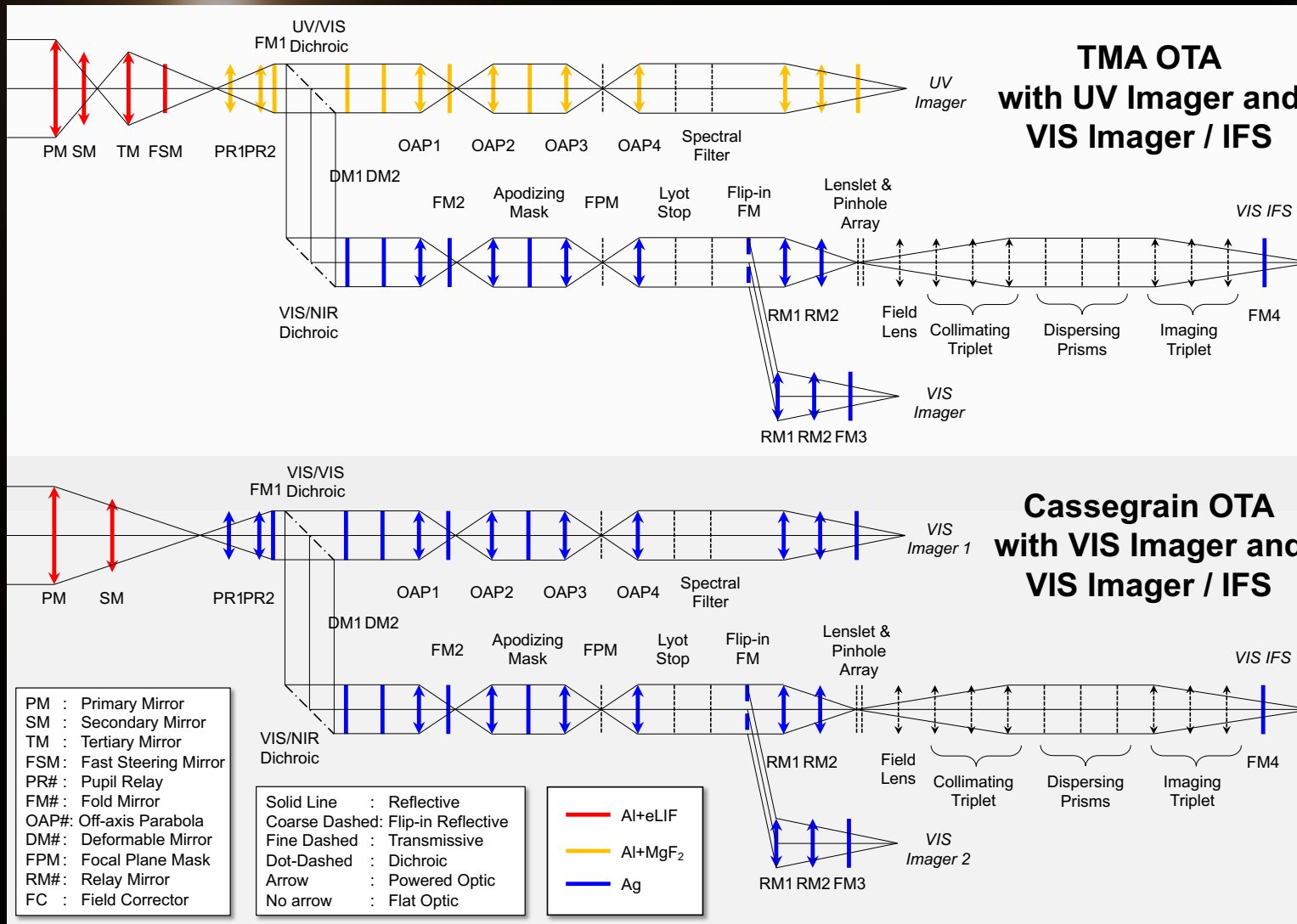


DRMs can estimate sensitivity of science performance to mission parameters



DRMs have come a long way

LUVOIR & HabEx DRMs used realistic optical layouts



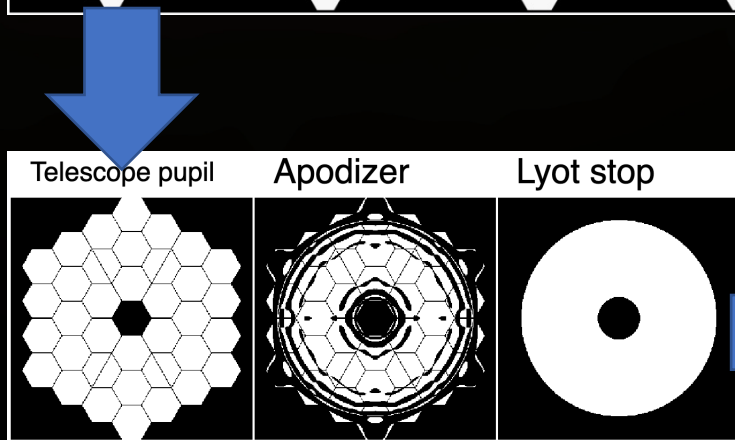
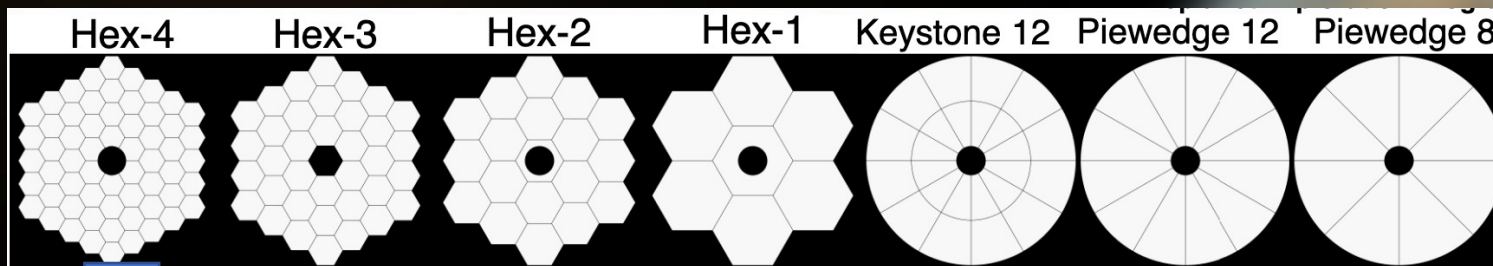
Key points:

- The reflectivity of coatings matters a lot!
i.e., $0.95^{12} = 0.5$
- We will likely have to trade bandwidth for throughput. UV coronagraphy reduces throughput at all wavelengths by up to ~ 0.5
- Efficiently parallelizing coronagraphs may be essential for wavelength coverage

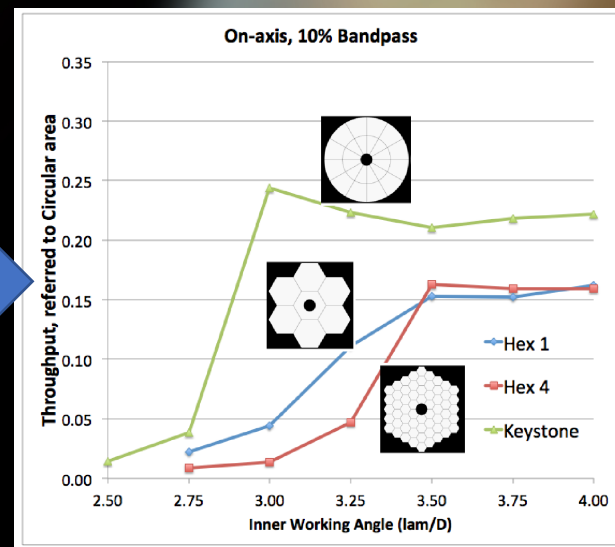
DRMs have come a long way

LUVOIR & HabEx DRMs used realistic coronagraph simulations

ExEP's SCDA Study was essential to understanding the coronagraph design trade space and system-level requirements.



Slides from Shaklan (2016), many papers from SCDA Team

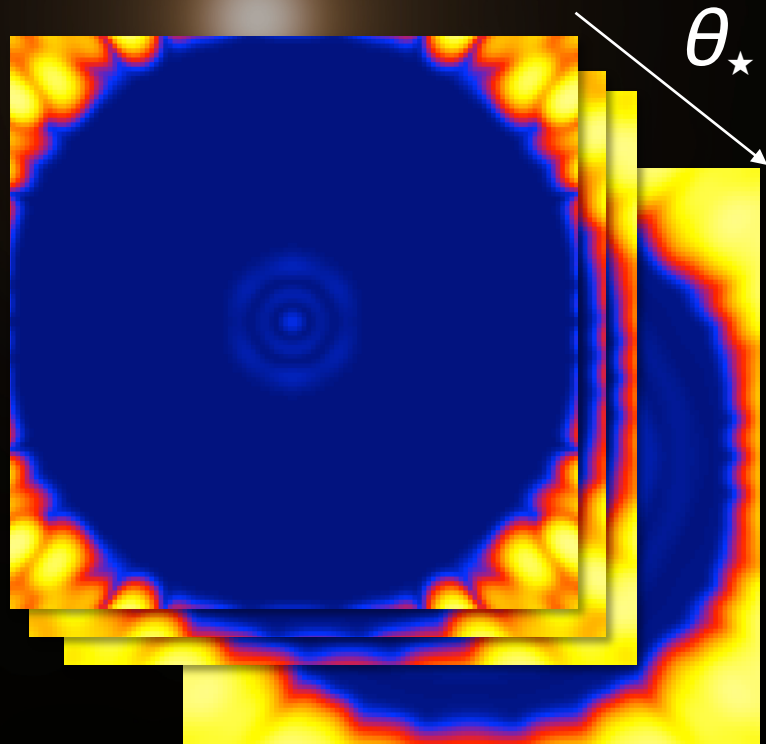


Key points:

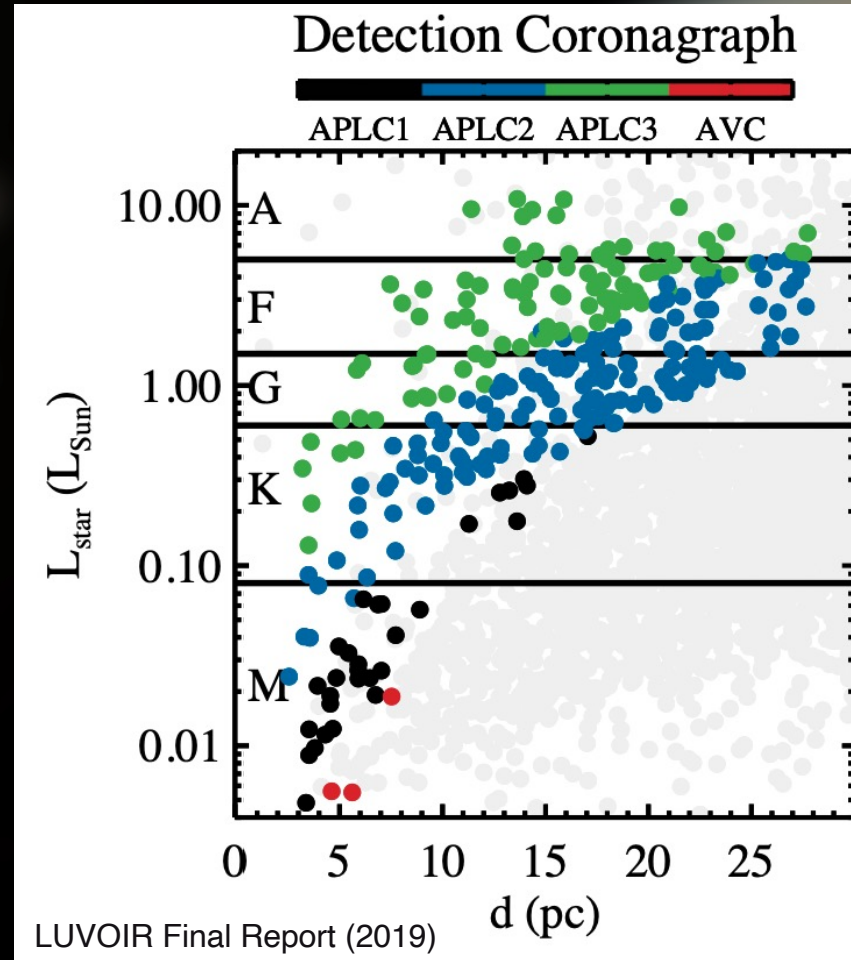
- PM & SM geometry matters a lot—must design at system level!
- Coronagraph mask design has non-intuitive trades (OWA vs bandwidth, contrast vs IWA, etc.). Improving one parameter often comes at the expense of others.

DRMs have come a long way

LUVOIR & HabEx DRMs used realistic coronagraph simulations



Zimmerman/Soummer/St. Laurent



DRM optimally assigned LUVOIR-A's 4 coronagraph masks to stars.

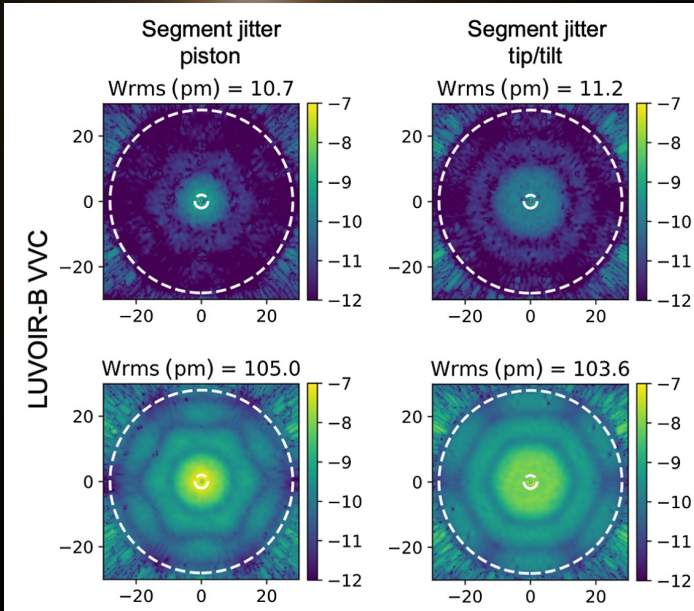
Key points:

- One coronagraph doesn't have to do it all. We can design different coronagraphs for different stars
- Working within the IWA is not out of the question for some coronagraphs

- We assigned simulated 2D leaked starlight to each star as a function of stellar diameter
- We used 2D off-axis simulated PSFs to calculate planet's flux

DRMs have come a long way

Recent DRMs include simulated noise floors via dynamic aberrations

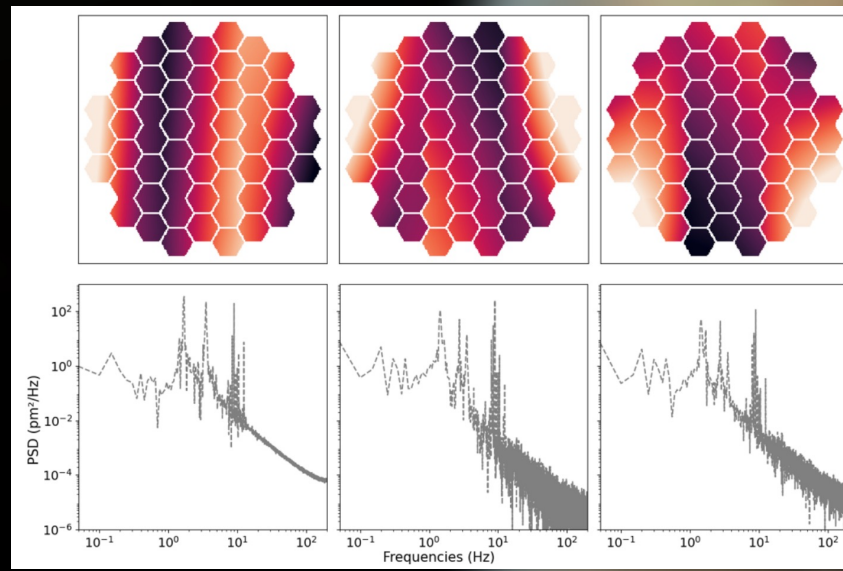


Juanola-Parramon et al. (2022)

Parameterized impact of dynamic disturbances on LUV0IR B.

Potier et al. (2022)

Used the WFE time series from ULTRA study to model noise floor of LUV0IR B.



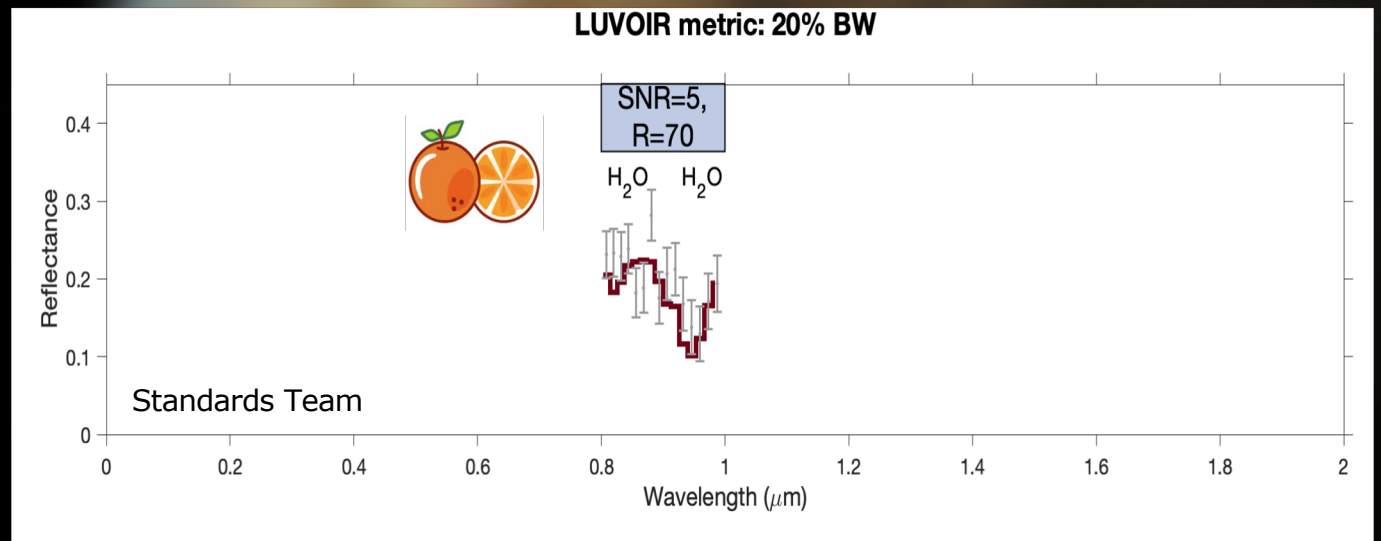
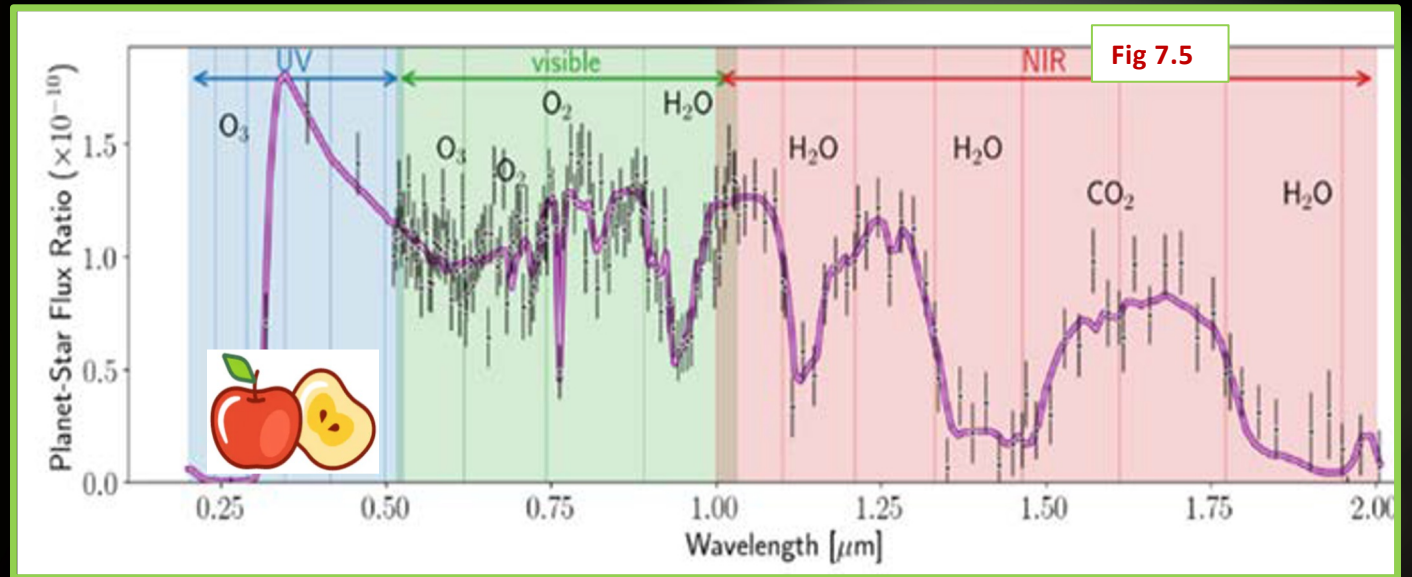
Key points:

- The noise floor is one of the most important instrument requirements to get right. We need confidence in these simulations.
- We can now iterate between engineering simulations and coronagraph simulations to minimize key aberrations

Exoplanet “yields” aren’t everything

DRMs can track additional metrics

- Spectral quality/coverage
- Exposure times
- WFSC times
- Orbit retrieval
- Schedulability
- Etc.

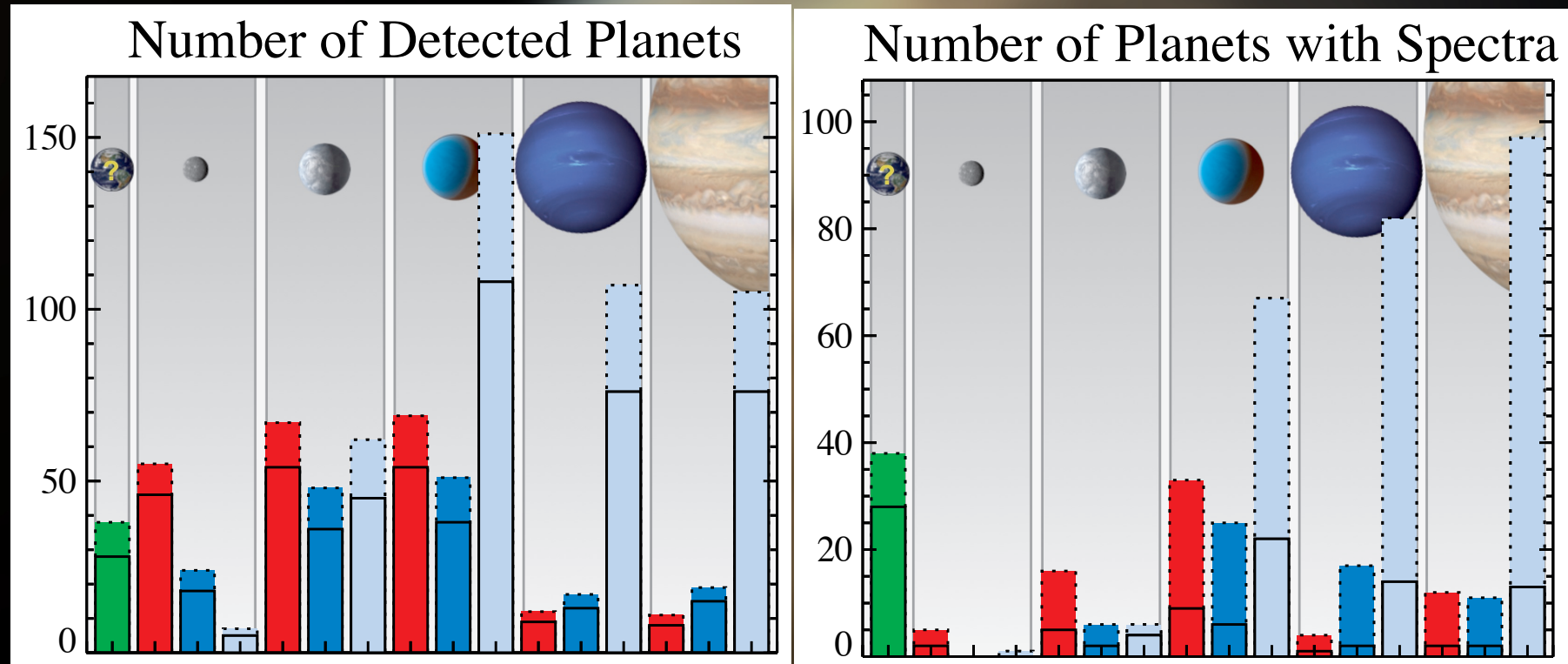


There are many opportunities for improvement!

There are a multitude of low TRL technologies that could radically change our ability to achieve science requirements.

Howe & Stark (preliminary results)

- Improved observation optimization
- Detector technologies:
 - Skipper CCDs & TES arrays
- WFS-based PSF subtraction a la Guyon et al. (2022)
- PIAA & other high throughput coronagraph designs
- Parabolic DMs
- Multi-star WFC
- Etc.



Just one example: A mission with energy resolving TES arrays (dashed lines) could increase exoEarth detection yields by **~30%** compared to LUV0IR/HabEx baselined EMCCDs (solid lines) and would characterize **hundreds** of additional planets for free.

Science requirements flow down to mission requirements. However, iteration is key to arriving at an optimized architecture. **DRMs provide the machinery to do that, to estimate science productivity, and to map out science yield sensitivities.**

The exoplanet science performance of HWO is dependent on a large number of parameters that are all tied together/traded. **Design must be thought of at the system level, from the PM to the detector, and from the spacecraft *to the observing strategy.***

The trade space is enormous and there are many exciting ideas that can improve science yield/quality. **Small investments in low TRL technologies may have enormous benefits.**

We have a lot of work to do, but a lot to be excited about!

Coronagraphic Terms

"Raw" Contrast

Residual "dark zone" starlight in a photometric aperture at (x,y) divided by the star's flux if placed at (x,y) . Varies with stellar diameter & WF aberrations.

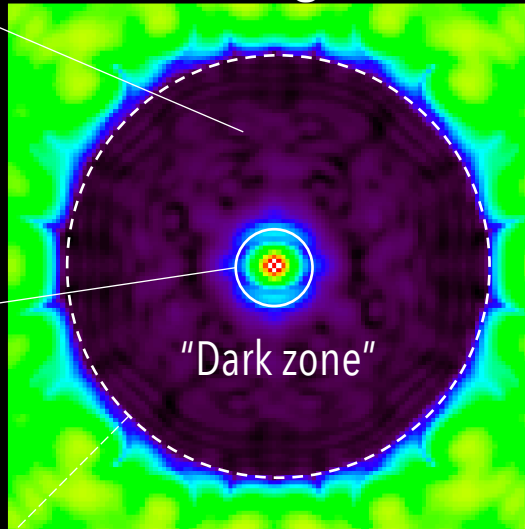
Inner Working Angle (IWA)

Radius interior to which exoplanet detection is difficult. Mathematically defined as radius where throughput reaches half-max in units of λ/D .

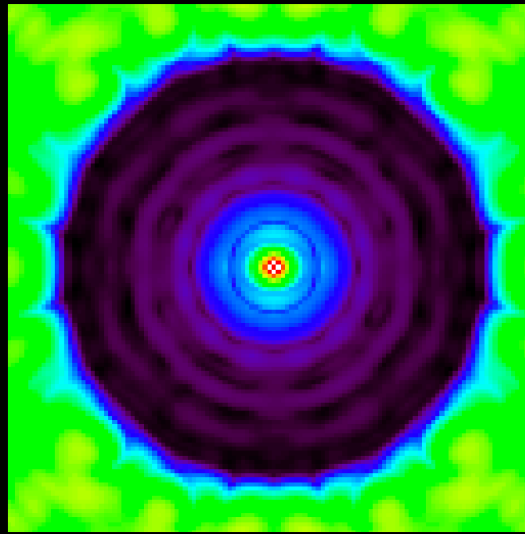
Outer Working Angle (OWA)

Radius beyond which exoplanets cannot be detected. Usually set by residual starlight in units of λ/D .

Science Image

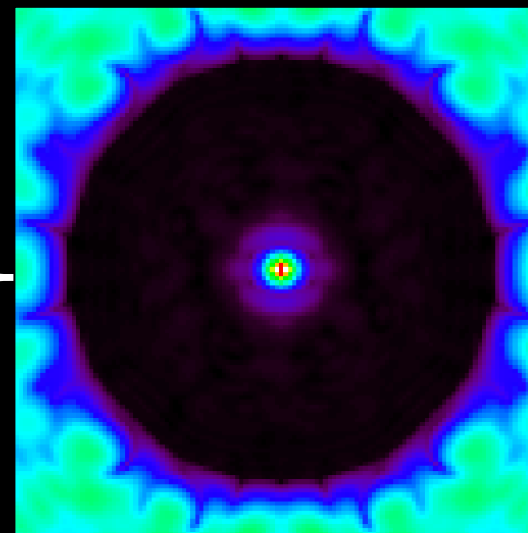


Reference PSF



PSF-subtracted Image

Subtract reference star from science star to form final image



Noise floor/contrast floor

Estimated via stddev of remaining speckles, i.e. what varies between observations

